

Precise

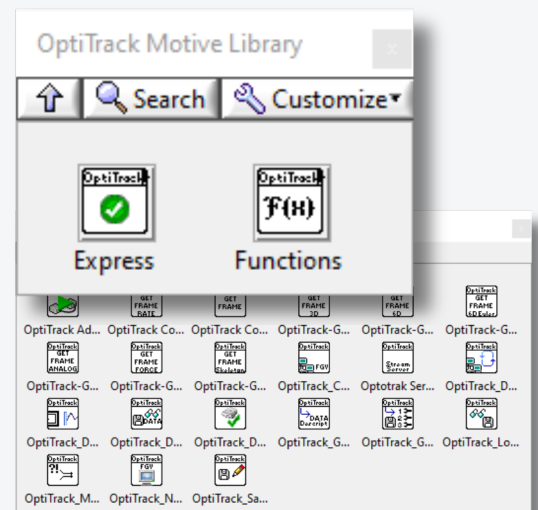
Accurate

Reliable



The OptiTrack measurement system tracks real-time movement with exceptional accuracy and resolution. While it is capable of traditional passive marker measurement, it is also capable of using active markers to prevent the cameras from getting confused during the marker identification and localization process.

The drivers allow for real-time streaming of position and orientation from an OptiTrack Motive host computer directly to the LabVIEW environment on a secondary computer. This allows for offloading of valuable CPU resources on the secondary computer. The drivers can be configured easily in the Advanced Interface which comes as an out-of-the-box solution for data acquisition. The drivers also include a palette to allow you to get under the hood and access data directly in your custom LabVIEW applications.



**+** Hardware Accessories Also Available: simVITRO line of IP65 rated active markers and repeatable placement marker mounts are ideal for harsh environments and repetitive testing